

A perspective view of a long, narrow hallway with walls and ceiling made of rectangular panels. The walls are illuminated with a gradient of pink and purple light. The ceiling is also illuminated with a similar gradient. The floor is dark and reflective, showing the light from the walls and ceiling. The hallway leads to a bright, white rectangular opening at the far end.

**LED BENDABLE LINEAR  
LIGHTS**



## Facaro LED Bendable Linear Lights

### General Specifications

Mounting Type	Surface
Limited Warranty	2 Years
Lighting Source Type	SMD LED

### Fixture Specifications

Housing Material	Polycarbonate
Diffuser Material	Polycarbonate
Surface Finish	Glossy
Driver Type	External

### Performance Specifications

Colour rendering index (CRI)	80+
Start up time	Instant
Efficacy (Lm / W)	100+

### Electrical Specifications

Input Voltage (VAC)	150 - 270 VAC
Total Harmonic Distorsion	Upto 10%
Power Factor	0.95 +
Driver Efficiency	Upto 80%

### Safety Features

Ingress Protection	IP44
Surge Protection	Upto 2KV
Short Circuit Protection	Yes
Open Circuit Protection	Yes

### Environmental Specification

Working Temperature	0 to 40 C
Vibrations	1G

### Mechanical Specifications

Luminaire Dimension (L X W X H)	14mm X 13mm
---------------------------------	-------------

## HOW TO ORDER

**HUB - FACARO - 1W/F - GR - 4050K**

Input Power	1	Housing Colour	2
<b>1W/F :</b> 1W/F		<b>GR :</b> Grey	
<b>3W/F :</b> 3W/F		<b>WH :</b> White	
<b>5W/F :</b> 5W/F		<b>BL :</b> Black	

Colour Temperature (CCT)	3
<b>2732K :</b> 2700K - 3200K	
<b>4050K :</b> 4000K - 5000K	
<b>6050K :</b> 6000K - 6500K	

### How to order example

To order a Hublit products, you can choose an Input Power from the values above from the minimum value to the maximum value, in this case we use smallest value. Similarly you can choose from the Colour Temperature (CCT) options from 2700K to 6500K and so on to generate the model number; Please find the example of a filled model number for this product.

**Example : HUB - FACARO - 1W/F - GR - 4050K**



## Foremo LED Bendable Linear Lights

### General Specifications

Mounting Type	Surface
Limited Warranty	2 Years
Lighting Source Type	SMD LED

### Fixture Specifications

Housing Material	Polycarbonate
Diffuser Material	Polycarbonate
Surface Finish	Glossy
Housing Colour	White
Driver Type	External

### Performance Specifications

Colour rendering index (CRI)	80+
Start up time	Instant
Efficacy (Lm / W)	100+

### Electrical Specifications

Input Voltage (VAC)	150 - 270 VAC
Total Harmonic Distorsion	Upto 10%
Power Factor	0.95 +
Driver Efficiency	Upto 80%

### Safety Features

Ingress Protection	IP44
Surge Protection	Upto 2KV
Short Circuit Protection	Yes
Open Circuit Protection	Yes

### Environmental Specification

Working Temperature	0 to 40 C
Vibrations	1G

### Mechanical Specifications

Luminaire Dimension (L X W X H)	10mm X 18.5mm
---------------------------------	---------------

## HOW TO ORDER

HUB - FOREMO -

3W/F

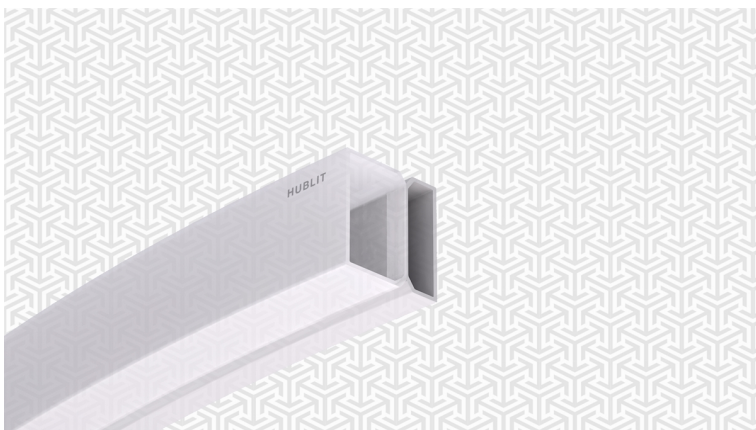
BL

Input Power	1	Colour Temperature (CCT)	2
1W/F : 1W/F		2732K : 2700K - 3200K	
3W/F : 3W/F		4050K : 4000K - 5000K	
		6050K : 6000K - 6500K	
		RD : Red	
		RD : Red	
		GR : Green	
		GR : Green	
		BL : Blue	

### How to order example

To order a Hublit products, you can choose an Input Power from the values above from the minimum value to the maximum value, in this case we use smallest value. Similarly you can choose from the Colour Temperature (CCT) options from 2700K to 6500K and so on to generate the model number; Please find the example of a filled model number for this product.

**Example : HUB - FOREMO - 3W/F - BL**



## Mostro LED Bendable Linear Lights

### General Specifications

Mounting Type	Surface
Limited Warranty	2 Years
Lighting Source Type	SMD LED

### Fixture Specifications

Housing Material	Polycarbonate
Diffuser Material	Polycarbonate
Surface Finish	Anodised
Driver Type	External

### Performance Specifications

Colour rendering index (CRI)	80+
Start up time	Instant
Efficacy (Lm / W)	100+

### Electrical Specifications

Input Voltage (VAC)	150 - 270 VAC
Total Harmonic Distorsion	Upto 10%
Power Factor	0.95 +
Driver Efficiency	Upto 80%

### Safety Features

Ingress Protection	IP44
Surge Protection	Upto 2KV
Short Circuit Protection	Yes
Open Circuit Protection	Yes

### Environmental Specification

Working Temperature	0 to 40 C
Vibrations	1G

### Mechanical Specifications

Luminaire Dimension (L X W X H)	14mm X 13mm
---------------------------------	-------------

## HOW TO ORDER

**HUB - MOSTRO - 1W/F - GR - 4050K**

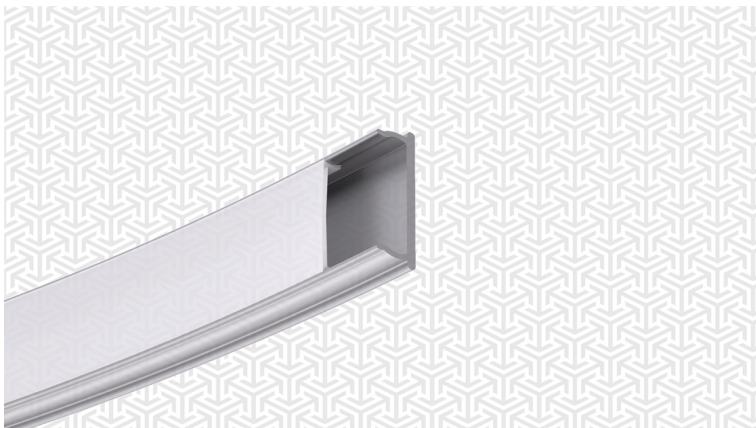
Input Power	1	Housing Colour	2
<b>1W/F :</b> 1W/F		<b>GR :</b> Grey	
<b>3W/F :</b> 3W/F		<b>WH :</b> White	
<b>5W/F :</b> 5W/F		<b>BL :</b> Black	

Colour Temperature (CCT)	3
<b>2732K :</b> 2700K - 3200K	
<b>4050K :</b> 4000K - 5000K	
<b>6050K :</b> 6000K - 6500K	

### How to order example

To order a Hublit products, you can choose an Input Power from the values above from the minimum value to the maximum value, in this case we use smallest value. Similarly you can choose from the Colour Temperature (CCT) options from 2700K to 6500K and so on to generate the model number; Please find the example of a filled model number for this product.

**Example : HUB - MOSTRO - 1W/F - GR - 4050K**



## Spezzi LED Bendable Linear Lights

### General Specifications

Mounting Type	Surface
Limited Warranty	2 Years
Lighting Source Type	SMD LED

### Fixture Specifications

Housing Material	Extruded Aluminium
Diffuser Material	Polycarbonate
Surface Finish	Anodised
Driver Type	External

### Performance Specifications

Colour rendering index (CRI)	80+
Start up time	Instant
Efficacy (Lm / W)	100+

### Electrical Specifications

Input Voltage (VAC)	150 - 270 VAC
Total Harmonic Distorsion	Upto 10%
Power Factor	0.95 +
Driver Efficiency	Upto 80%

### Safety Features

Ingress Protection	IP44
Surge Protection	Upto 2KV
Impact Protection	Yes
Open Circuit Protection	Yes

### Environmental Specification

Working Temperature	0 to 40 C
Vibrations	1G

### Mechanical Specifications

Luminaire Dimension (L X W X H)	18mm X 6mm
---------------------------------	------------

## HOW TO ORDER

**HUB - SPEZZI - 5W/F - WH - 4050K**

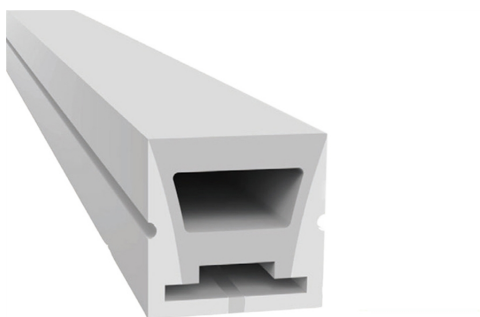
Input Power	1	Housing Colour	2
<b>1W/F :</b> 1W/F		<b>GR :</b> Grey	
<b>3W/F :</b> 3W/F		<b>WH :</b> White	
<b>5W/F :</b> 5W/F		<b>BL :</b> Black	

Colour Temperature (CCT)	3
<b>2732K :</b> 2700K - 3200K	
<b>4050K :</b> 4000K - 5000K	
<b>6050K :</b> 6000K - 6500K	

### How to order example

To order a Hublit products, you can choose an Input Power from the values above from the minimum value to the maximum value, in this case we use smallest value. Similarly you can choose from the Colour Temperature (CCT) options from 2700K to 6500K and so on to generate the model number; Please find the example of a filled model number for this product.

**Example : HUB - SPEZZI - 5W/F - WH - 4050K**



## Therns LED Bendable Linear Lights

### General Specifications

Mounting Type	Surface
Limited Warranty	2 Years
Beam Angle	60 Degrees
Lighting Source Type	SMD LED

### Fixture Specifications

Housing Shape	Sqaure
Surface Finish	Glossy
Housing Colour	White
Driver Type	External

### Performance Specifications

Colour rendering index (CRI)	80+
Start up time	Instant
Efficacy (Lm / W)	90+

### Electrical Specifications

Input Voltage (VAC)	120 - 270 VAC
Total Harmonic Distorsion	Upto 20%
Input Frequency	50 to 60 Hz
Power Factor	0.90 +
Driver Efficiency	Upto 80%

### Safety Features

Ingress Protection	IP65
Surge Protection	Upto 2KV
Open Circuit Protection	Yes

### Environmental Specification

Working Temperature	0 to 40 C
Vibrations	1G

## HOW TO ORDER

HUB - THERNS

1W/FT

4050K

Colour Temperature (CCT)

2

**2732K :** 2700K - 3200K

**4050K :** 4000K - 5000K

**6050K :** 6000K - 6500K

**RD :** Red

**RD :** Red

**GR :** Green

**GR :** Green

**BL :** Blue

### How to order example

To order a Hublit products, you can choose an Input Power from the values above from the minimum value to the maximum value, in this case we use smallest value. Similarly you can choose from the Colour Temperature (CCT) options from 2700K to 6500K and so on to generate the model number; Please find the example of a filled model number for this product.

**Example : HUB - THERNS - 1W/FT - 4050K**